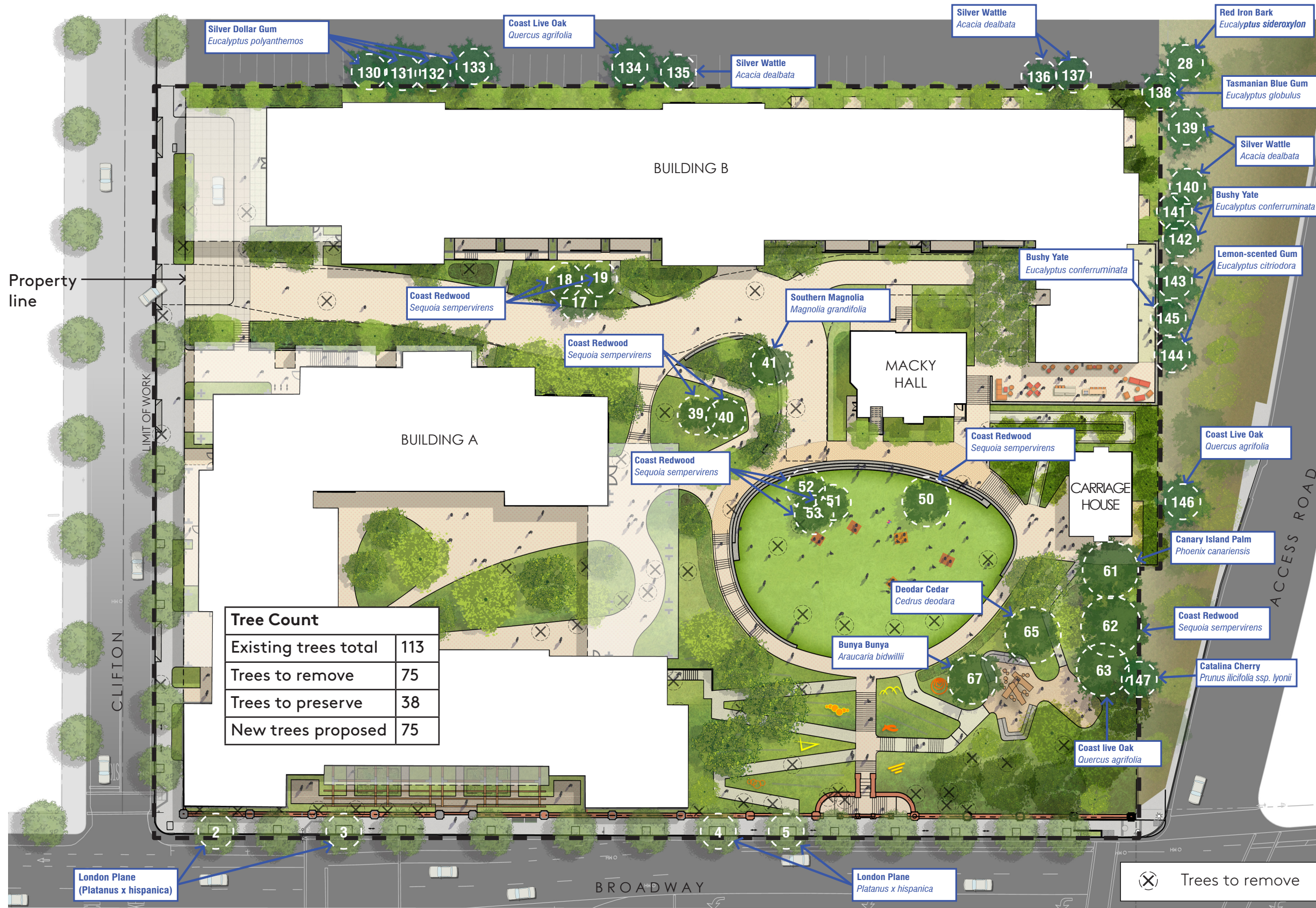


TREE PRESERVATION PLAN



Trees proposed for preservation within 30' of development activity (DBH)

2. *Platanus x hispanica* (21)
 3. *Platanus x hispanica* (17.5)
 4. *Platanus x hispanica* (14.5)
 5. *Platanus x hispanica* (15)
 17. *Sequoia sempervirens* (30)
 28. *Eucalyptus sideroxylon* (15.5)
 39. *Sequoia sempervirens* (44)
 40. *Sequoia sempervirens* (34)
 130. *Eucalyptus polyanthemus* (27.5)
 131. *Eucalyptus polyanthemus* (20)
 132. *Eucalyptus polyanthemus* (22)
 133. *Eucalyptus polyanthemus* (23)
 134. *Quercus agrifolia* (5.5)
 135. *Eucalyptus polyanthemus* (16.5)
 136. *Acacia dealbata* (9)
 137. *Acacia dealbata* (9.5)
 138. *Eucalyptus globulus* (68 @base)
 139. *Acacia dealbata* (6, 3, 6, 4)
 140. *Acacia dealbata* (3.5, 4.5, 1.5, 2)
 141. *Eucalyptus conferruminata* (6.5...)
 142. *Eucalyptus conferruminata* (14, 6)
 143. *Eucalyptus citriodora* (18, 17.5)
 144. *Eucalyptus citriodora* (16)
 145. *Eucalyptus conferruminata* (5...)
 146. *Quercus agrifolia* (11)
- Total: 25**

Trees proposed for preservation that are within 10' of construction (DBH)

18. *Sequoia sempervirens* (14)
 19. *Sequoia sempervirens* (34)
 61. *Phoenix canariensis* (29)
- Total: 3**

Other Trees to be preserved (DBH)

41. *Magnolia grandifolia* (19.5)
 50. *Sequoia sempervirens* (42)
 51. *Sequoia sempervirens* (39.5)
 52. *Sequoia sempervirens* (43)
 53. *Sequoia sempervirens* (30)
 62. *Sequoia sempervirens* (27)
 63. *Quercus agrifolia* (25)
 65. *Cedrus deodara* (32)
 67. *Araucaria bidwillii* (39)
 147. *Prunus ilicifolia ssp. lyonii* (9.5)
- Total: 10**

LANDSCAPE DESIGN

